

Initial observations of surface deformation
accompanying the recent M 8.1 Solomon
Islands megathrust rupture

Rich Briggs

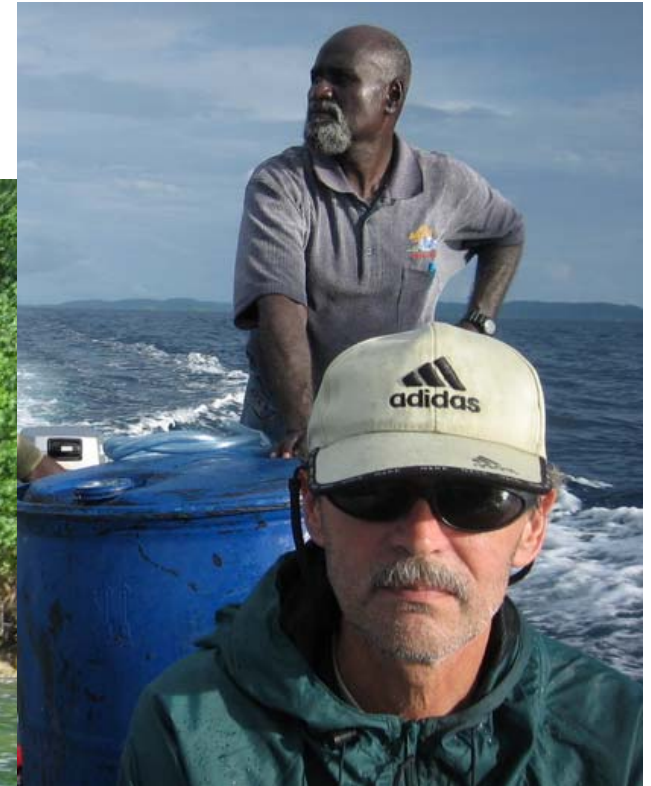


Abel Brown,
Ohio State

Fred Solomon
and Wilson,
Vella Lavella

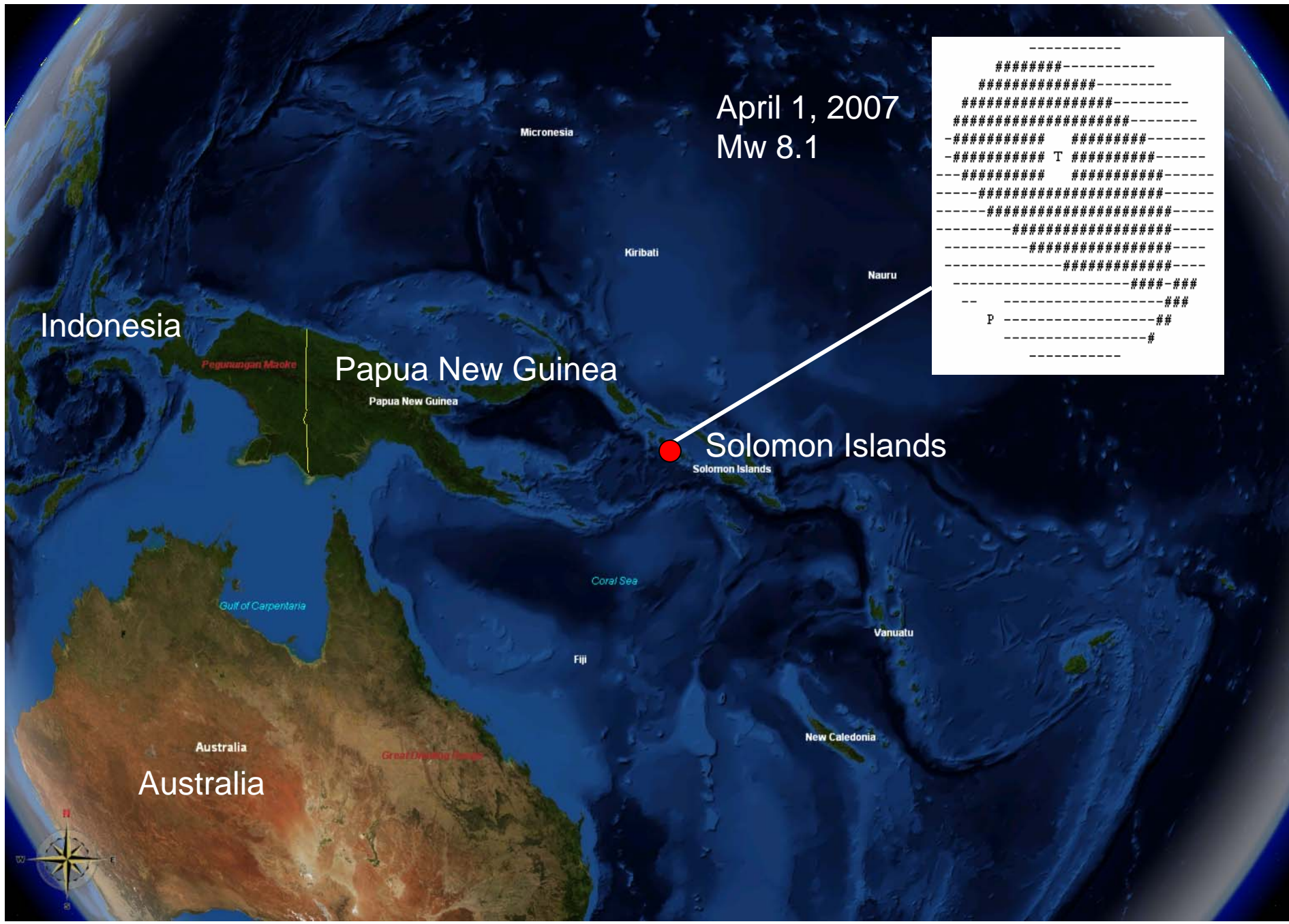
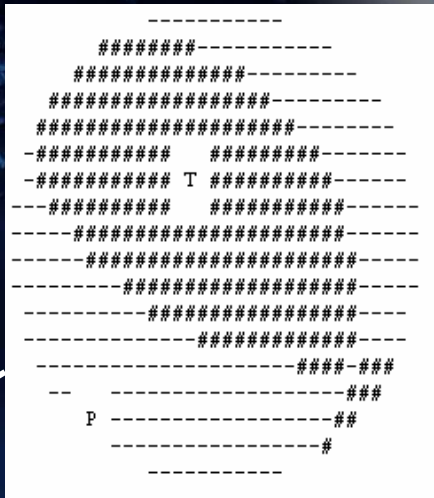


Alison Papabatu,
Div. Nat. Resources,
Solomon Islands



Fred Taylor,
UT Austin

April 1, 2007
Mw 8.1



Indonesia

Papua New Guinea

Solomon Islands

Australia

Micronesia

Kiribati

Nauru

Coral Sea

Fiji

Vanuatu

New Caledonia

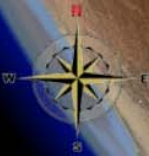
Australia

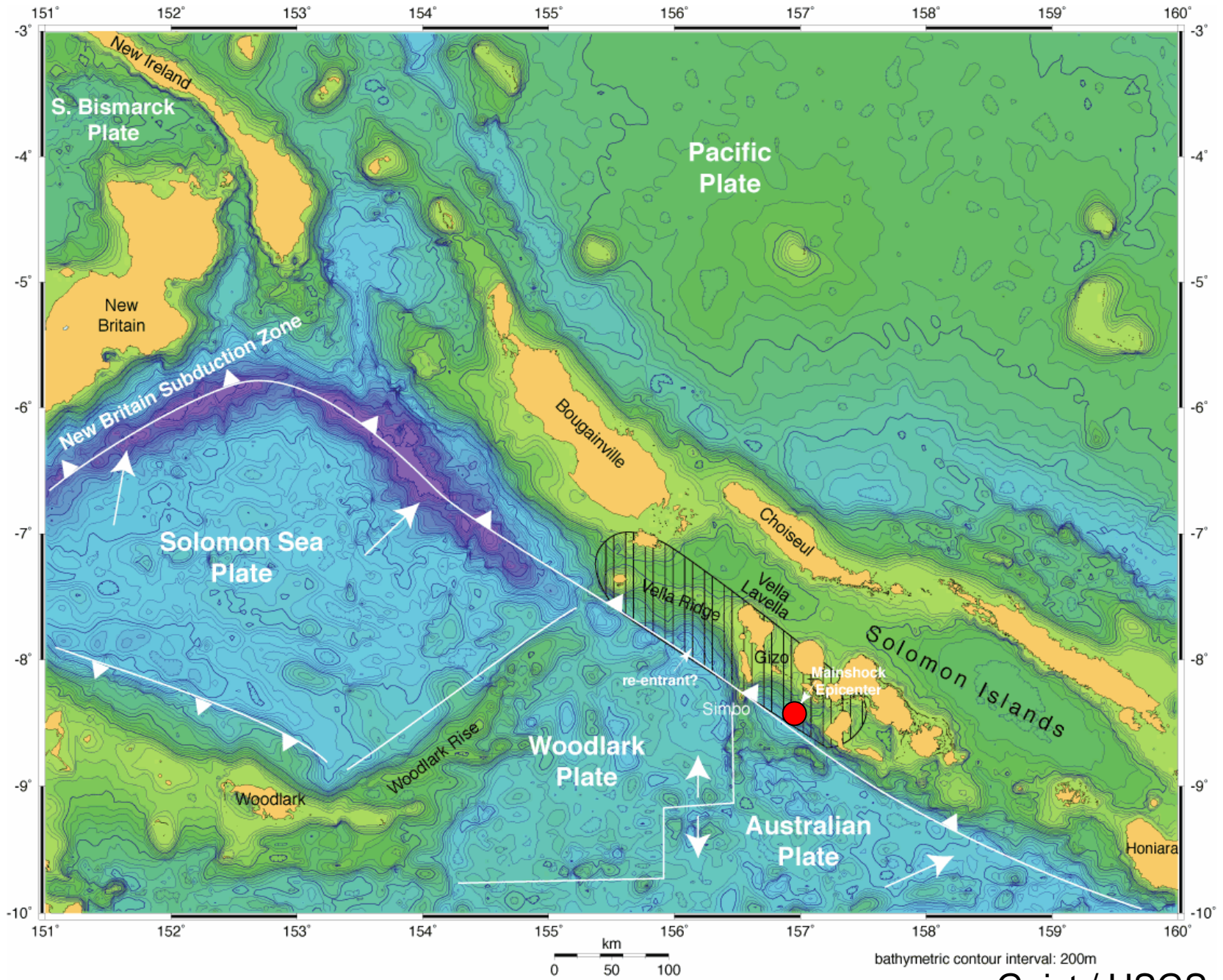
Great Ocean Road

Pegunungan Maoke

Papua New Guinea

Solomon Islands





Geist / USGS



Bougainville

Western Province

Western Province

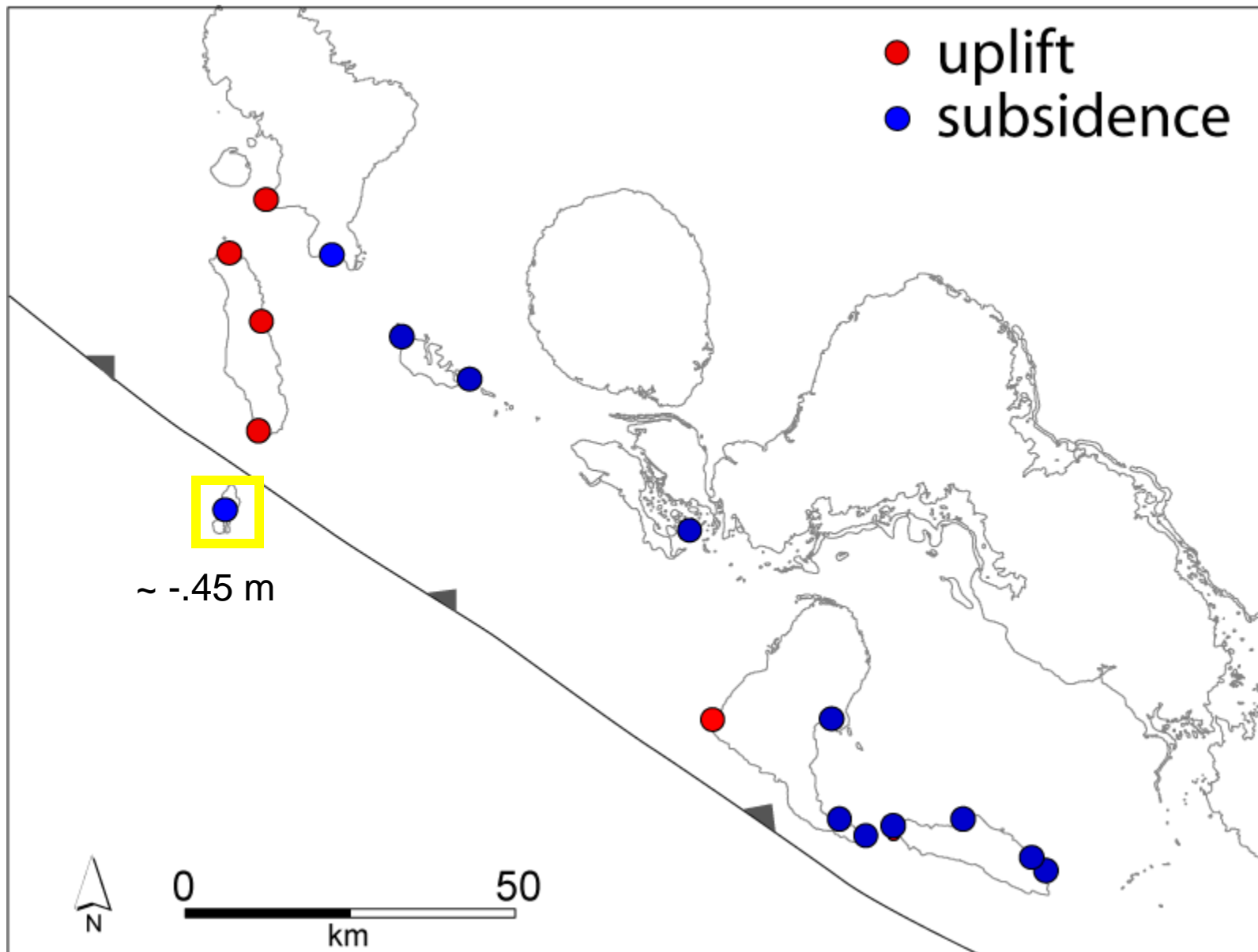
Solomon Islands

Honiara

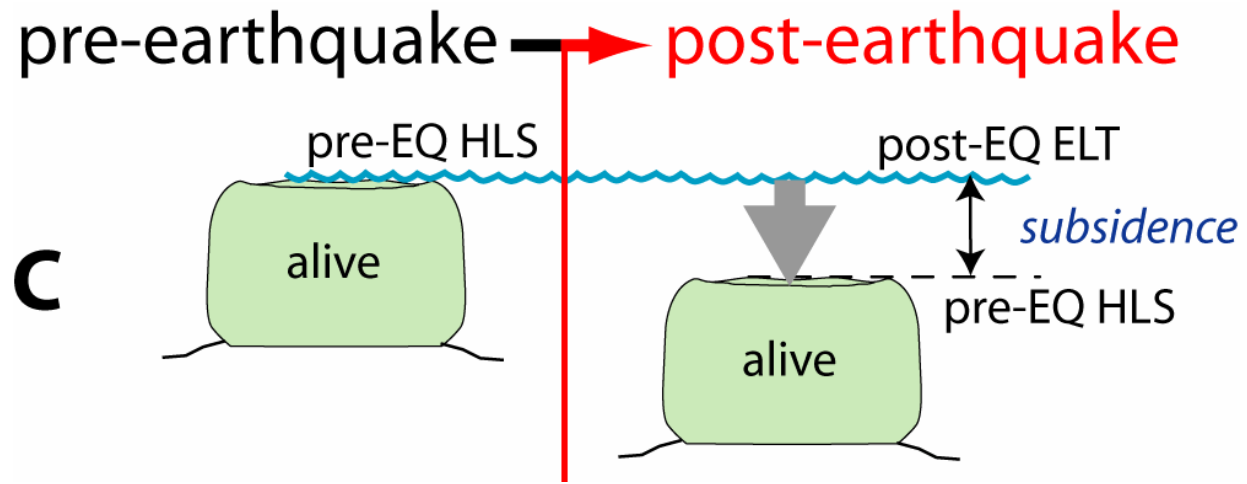
Guadalcanal



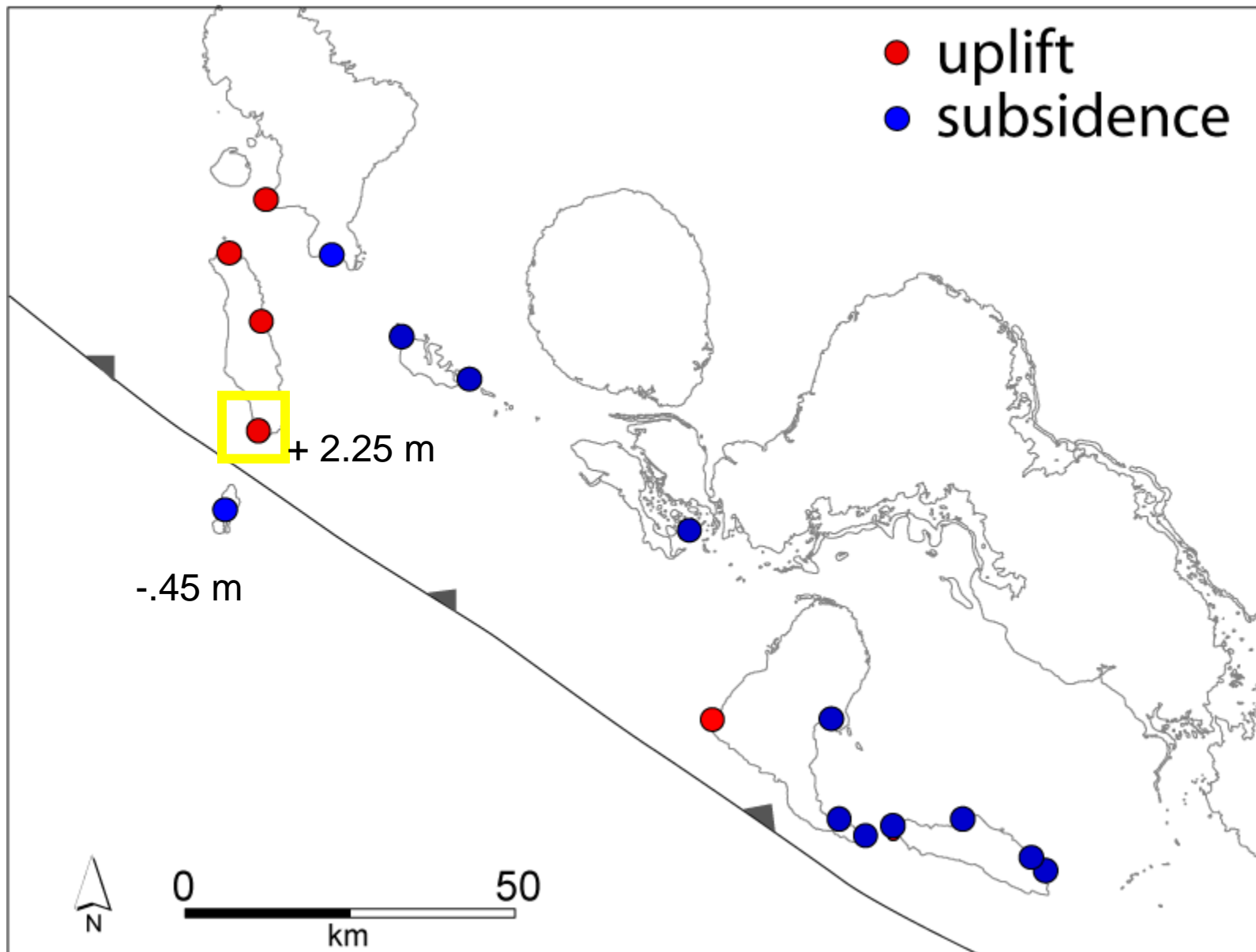






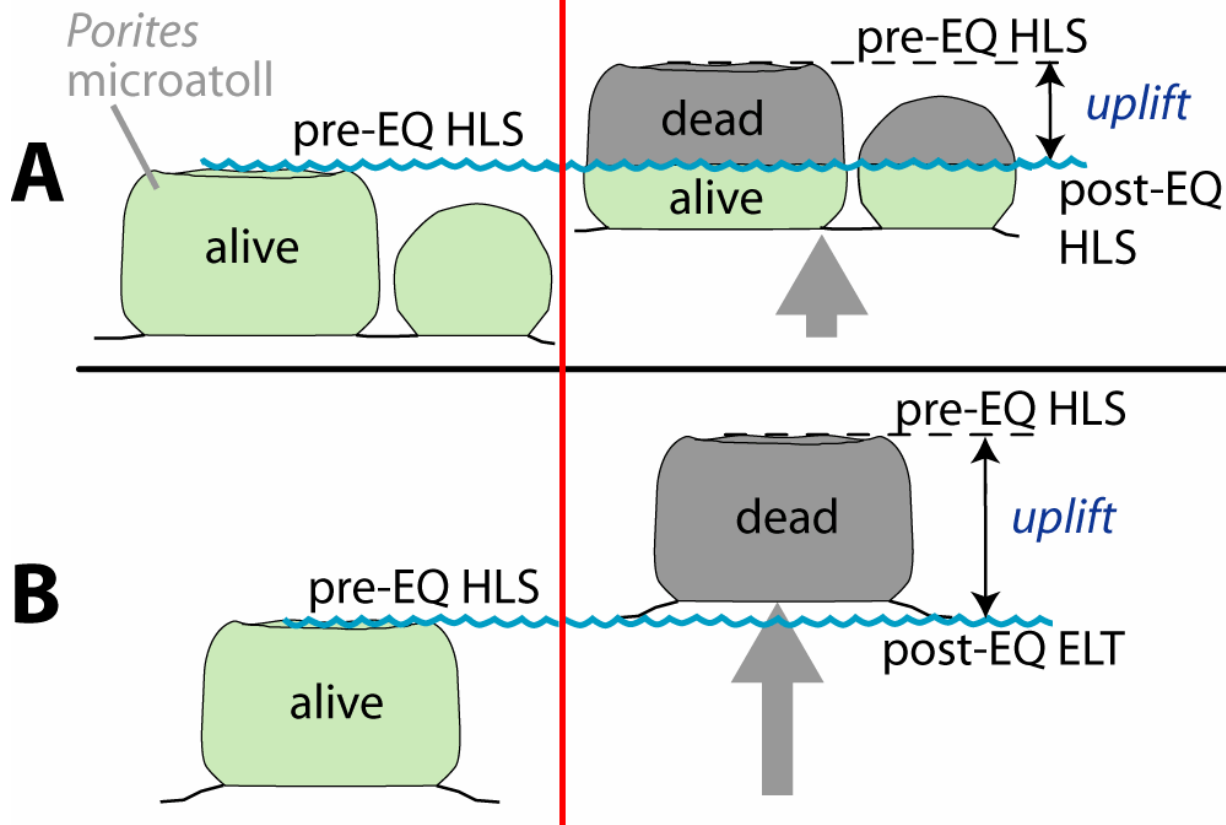








pre-earthquake → post-earthquake



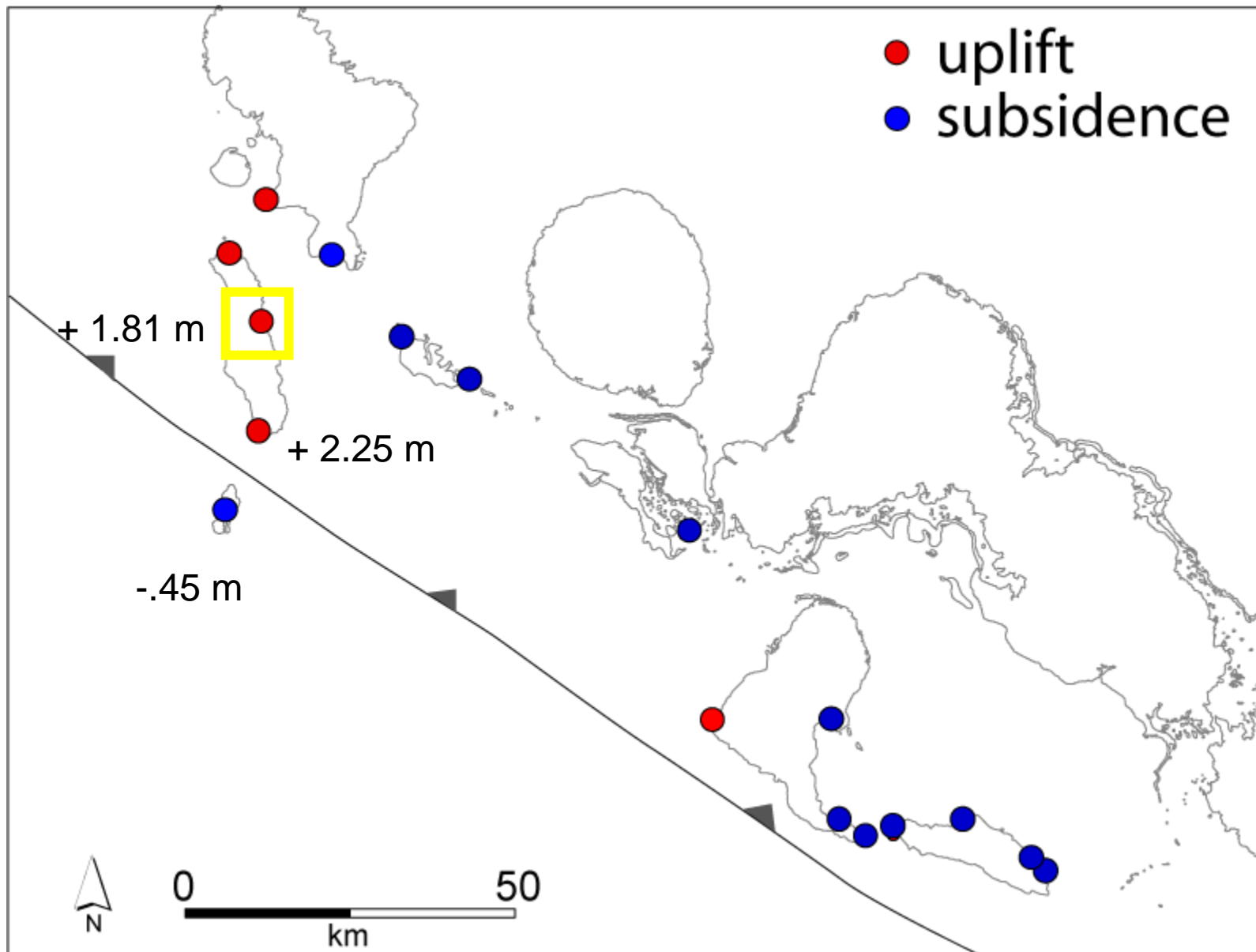










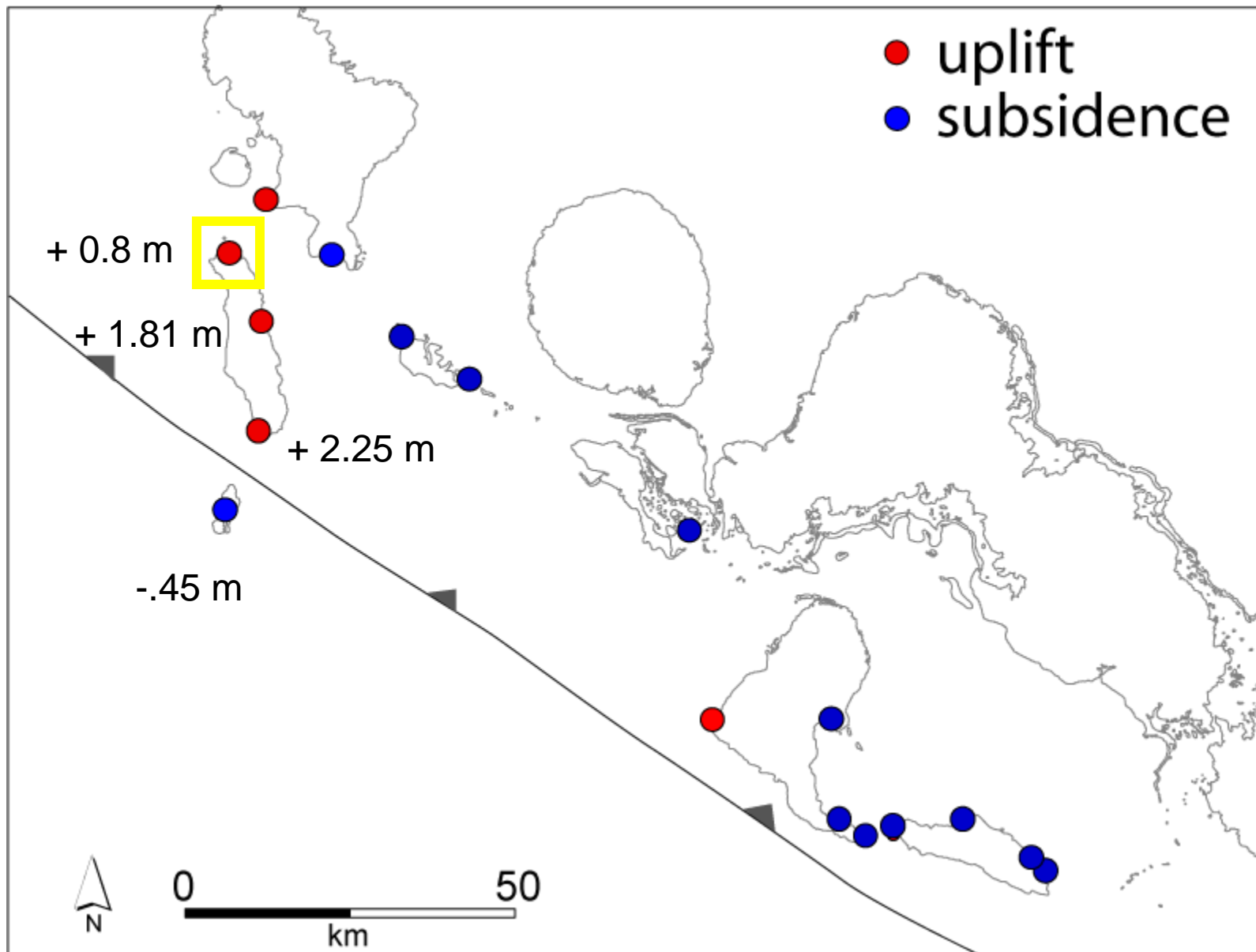






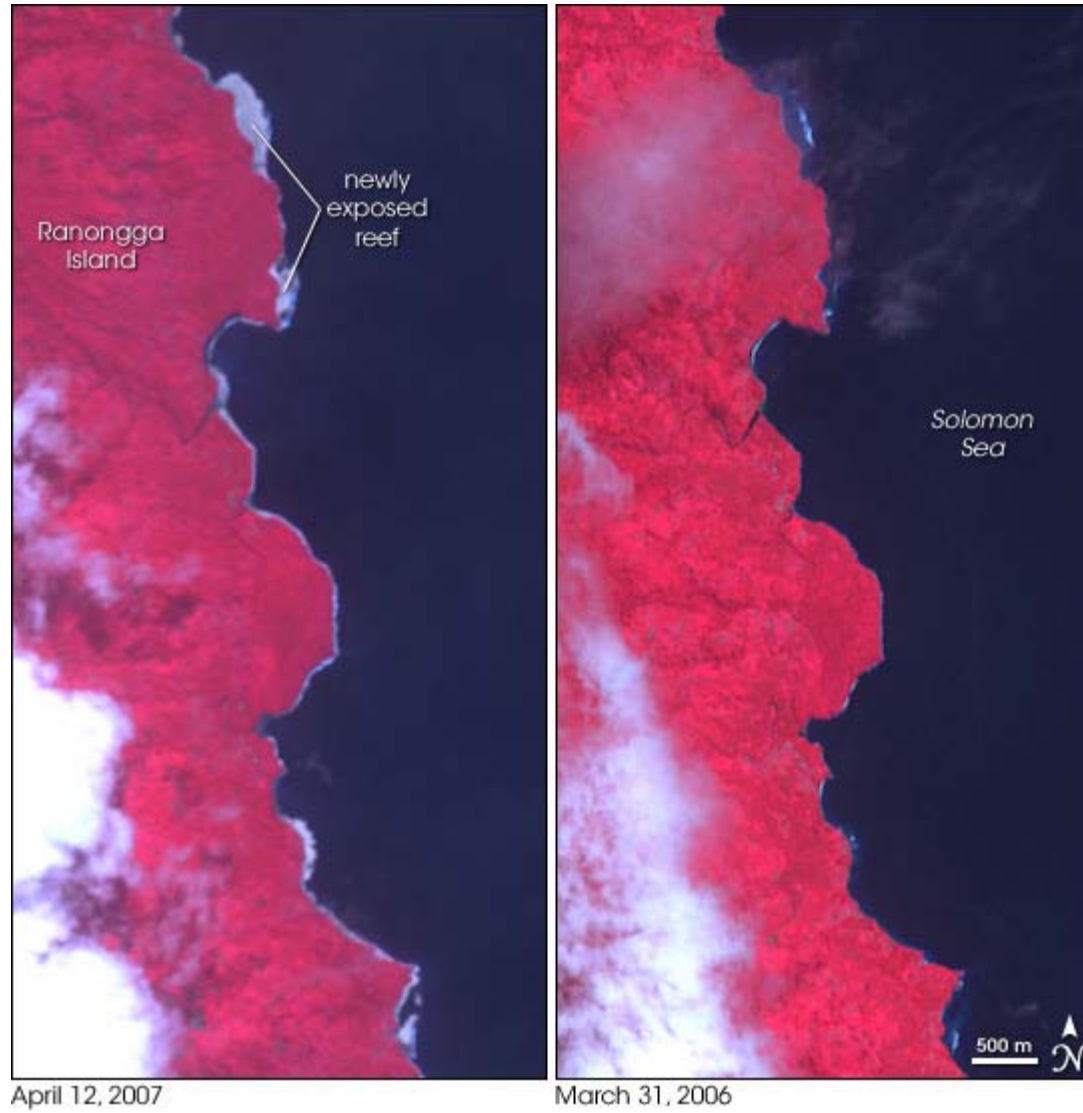




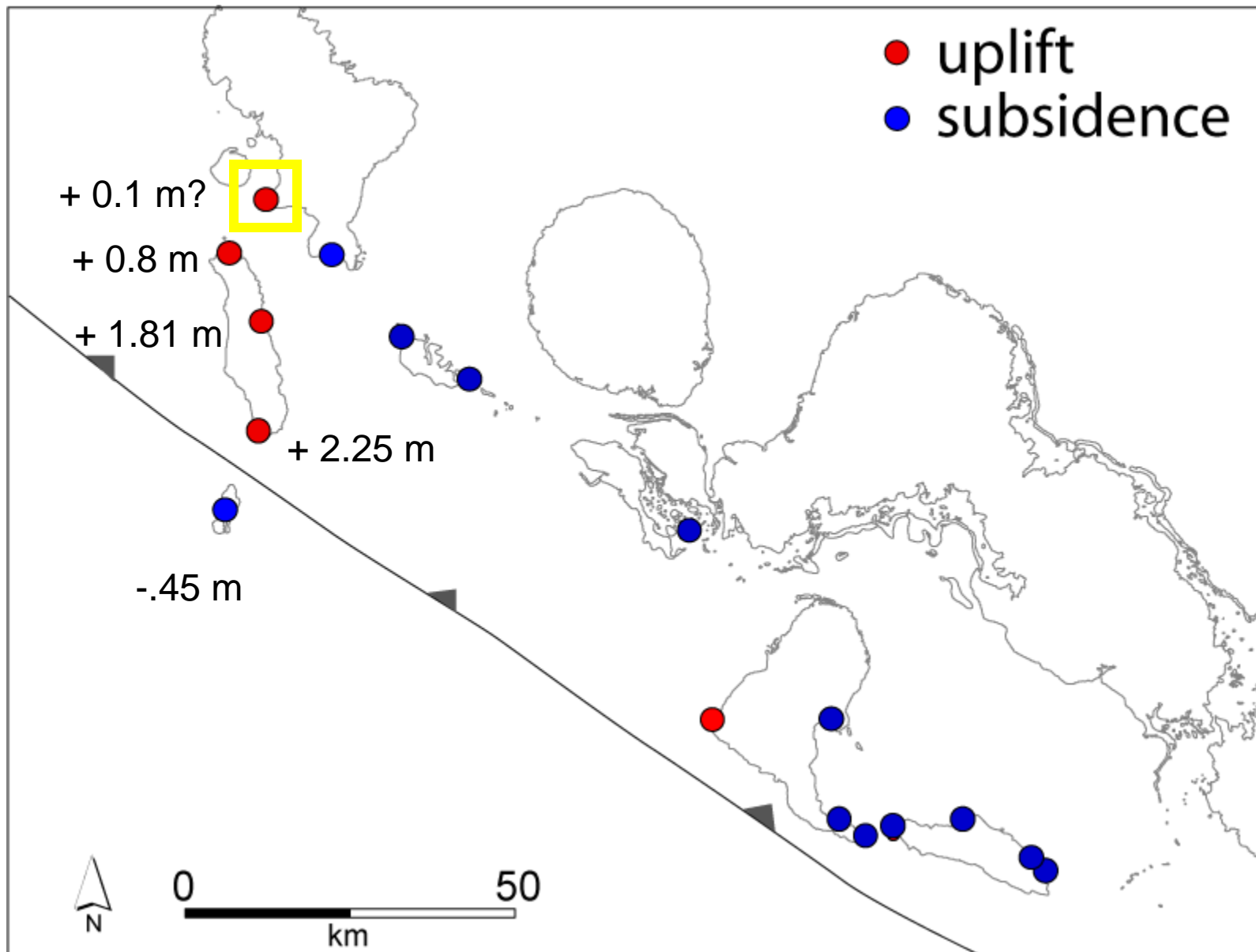






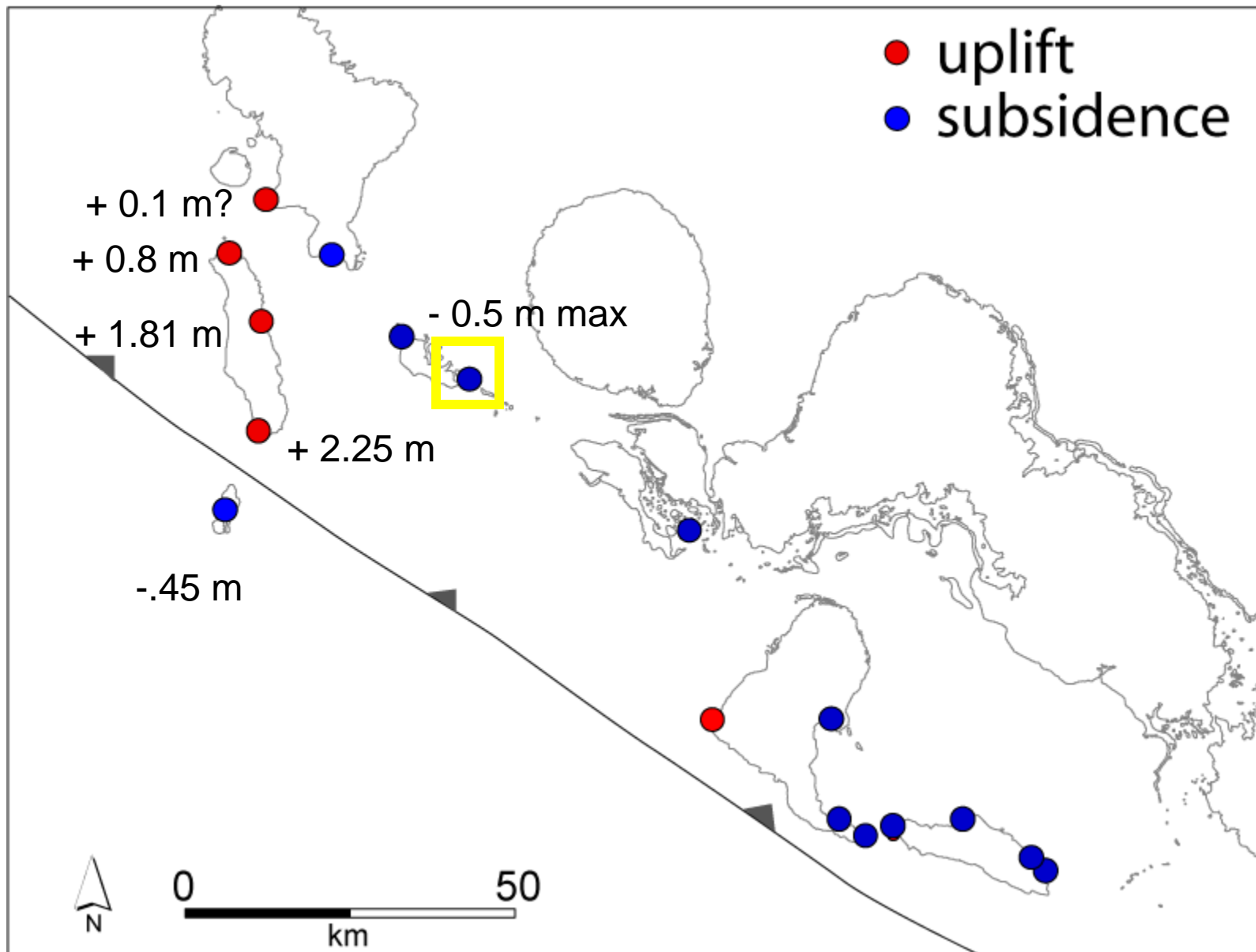


Aron Meltzner











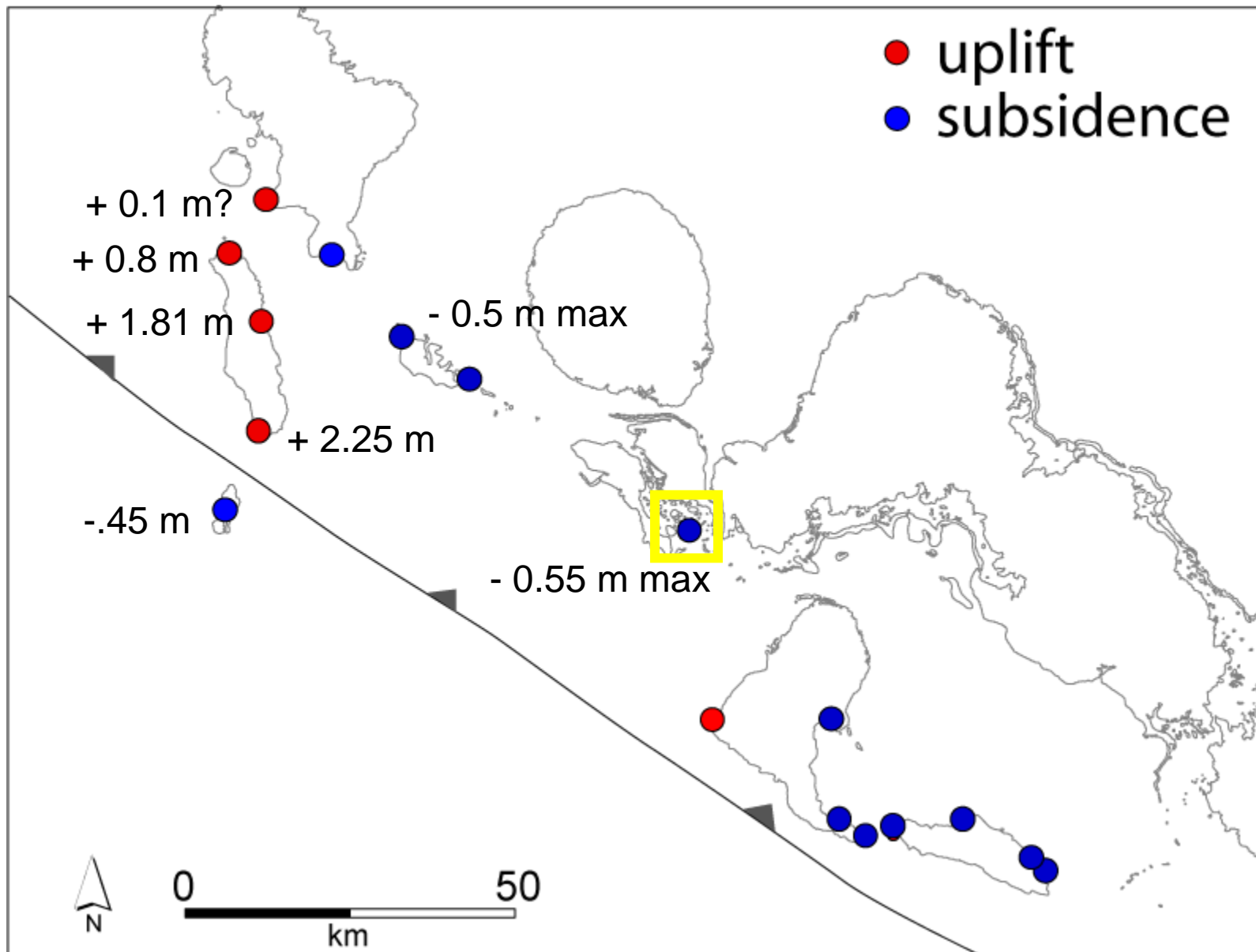












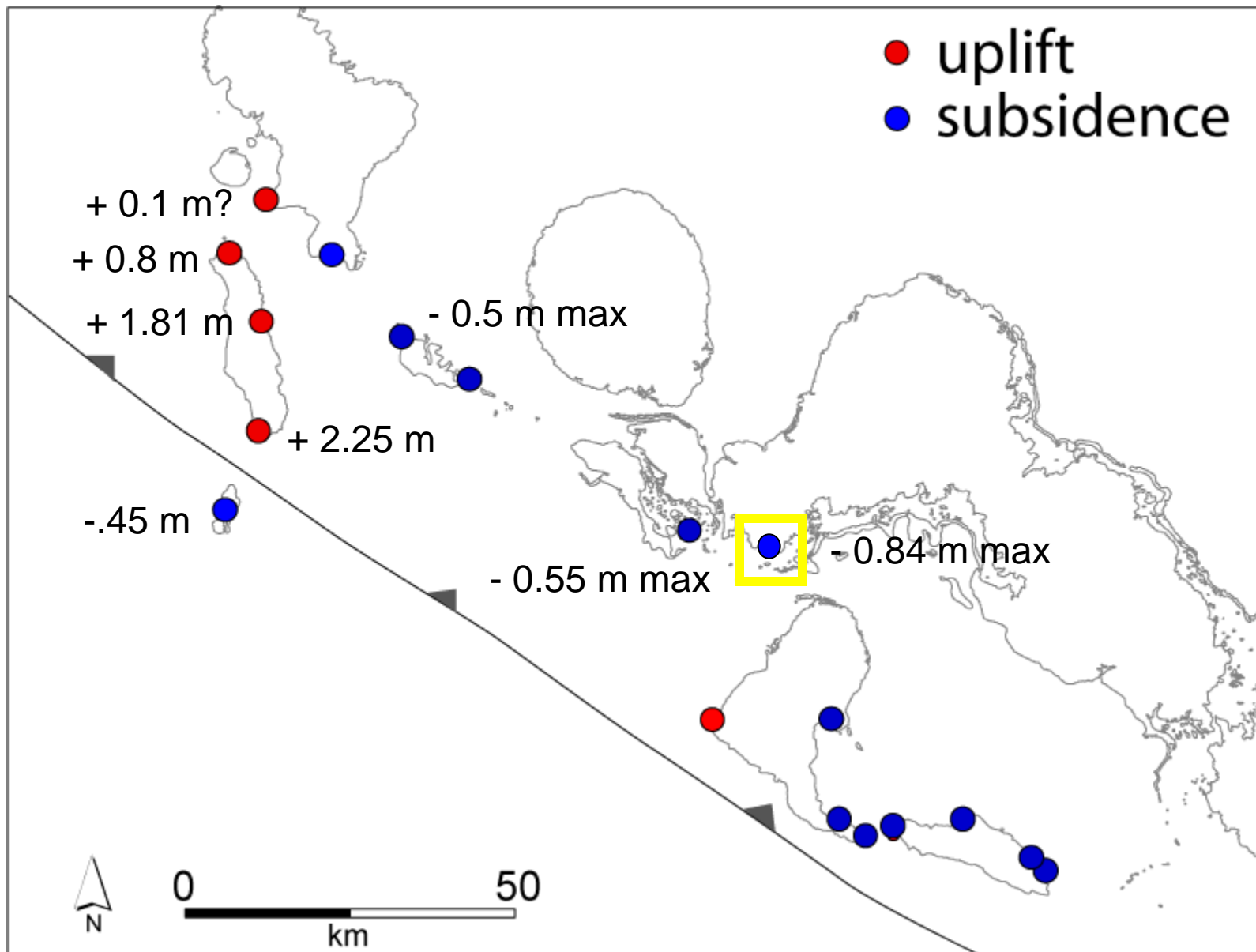
















High tide pre-rupture

High tide post-rupture



